



Multi Card Director

Owner's manual

Viewer

Slide Converter

Read the " Setting and Operation manual" thoroughly to understand basic operation and handling procedure of Multi Card Director.

Introduction

Multi Card Director has a Viewer function to allow you to make presentations using the data stored in the CompactFlash Card™.

If you use this function, you do not need to connect your computer or external video equipment to the projector. Just insert the CompactFlash Card with your presentation data into the Multi Card Director (referred to as MCI) which is attached to the projector. Then you can show the data on the screen by using the Viewer function.

Slide Converter, the software supplied in the CD-ROM, enables you to edit and convert images and PowerPoint data to the format to be played by the Viewer function.

To use Viewer function, you need to prepare a CompactFlash Card sold separately by us or available on the market and a computer with a drive compatible with CompactFlash Card.

Read the owner's manual "Setting and Operation" first to understand how to handle and install the MCI.

This owner's manual explains how to use Viewer function and Slide Converter.

In this owner's manual, Multi card Director can be referred to as "MCI" or "Muti Card Imager". These names can also appears on the operation screens and relevant descriptions.

Index

- 1. Preparation 5**
- 2. Viewer 7**
 - How to use the Viewer Function. 8
 - Edit Image Data for Display. 9
- 3. Slide Converter 13**
 - About Slide Converter. 14
 - Installing Slide Converter 15
 - Operating Slide Converter 15
 - Import Image Files 15
 - Edit Image Files 18
 - Save/Delete data 21
 - Other Functions 23

Chapter

I

1. Preparation

Read this chapter before use.

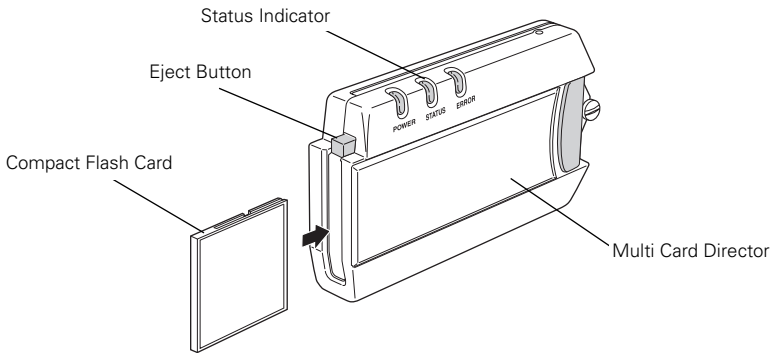
1. Preparation

1. Attach MCI to the projector

For details about attaching MCI to the projector, refer to another owner's manual, "Setting and Operation".

2. Insert Compact Flash Card to the MCI

Insert Compact Flash Card (hereinafter referred to as CF card) on which your presentation data is stored into the Multi Card Slot of the MCI until the EJECT button pops out.



Caution: The projector is reading the data while the Status indicator is flashing. Do not remove the CF Card, or it may result in damage of the data in the card.

About Compact Flash Card

Multi Card Director is compliant with CompactFlash Slot Type II and CFA (CompactFlash Association)-based CompactFlash™ Card can be used with it. MCI can handle up to 1GB. Volume of data over 1GB cannot be stored on it.

Operations with any CF Card other than our exclusive CF Card (optional) is not assured.

Caution: Use the CF Card exclusively for the MCI. Do not save the data for MCI with other computer data, or it may cause loss of data stored on the CF card.

Viewer supports FAT16

Use Compact Flash Card formatted by FAT16. Viewer does not support FAT32 and NTFS formats.

Note: CompactFlash is a trademark of San Disk Corporation in the U.S.A. and is licensed to CFA (CompactFlash™ Association).

Chapter 2

2. Viewer

Cautions in Playing Images

MCI supports only JPEG, bitmap and index data (.idx) edited with Slide Converter. Other data formats are not compatible.

MCI supports Compact Flash Card which meets CFA (CompactFlash™ Association) Standards only. Image data stored in other types of memory card cannot be played with MCI. Operations with any CF Card other than our exclusive CF Card (optionally sold) is not assured.

If you save index files edited by Slide Converter and JPEG/BMP image data into a CF card altogether, JPEG/BMP images cannot be played.

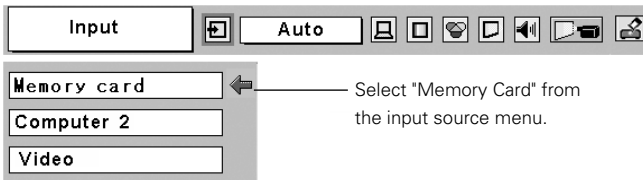
How to Use the Viewer Function

1. Select Input Source

Choose "Memory card" from input source menu of the projector.

The first image of the first index file stored in the CF Card is displayed on the screen.

If you exchange CF cards while the projector is showing images or insert a CF card into the MCI after turning on the projector, "Memory card" is automatically selected and the first image of the first index file in the CF card is displayed on the screen.



2. Selecting an Index File in the Memory Card Menu

Move the red frame pointer to the "Index" icon and press SELECT button. Thumbnail of the index files appears. Press MENU button to hide the On-Screen Menu.

* Index file cannot be selected while the On-Screen Menu is displayed.



3. Select an Image to be displayed.

Press Point button on the remote control or the top control of the projector to move the blue frame pointer to the index file to be displayed and then press SELECT button. Images will be displayed following to their configuration.

A file not set as Auto Play

Press Point Up button to project next page and Down to the previous page. Press SELECT button to display thumbnails of all the images in the index file. Press Point button to move the blue frame pointer to the image you wish to display and press SELECT button. Then the selected image will appear on a screen.

A file set as Auto Play

Images in the index file will be projected automatically one after another. This Auto Play function can be paused by pressing Point Down button and restarted by Point Up button. Press SELECT button to display thumbnails of all the images in the index file. Press Point button to move the yellow frame pointer to an image and then press SELECT button. Auto Play will restart from the image.

Press SELECT button to display thumbnails of all the images in the index file

Move the flame to an image and press SELECT button. Auto Play will restart from the image.



Note: Selecting the Page icon displays thumbnail of all the images in the selected index file. Select an image by pressing Point Right or Left button and press SELECT button to start Auto Play from the image.

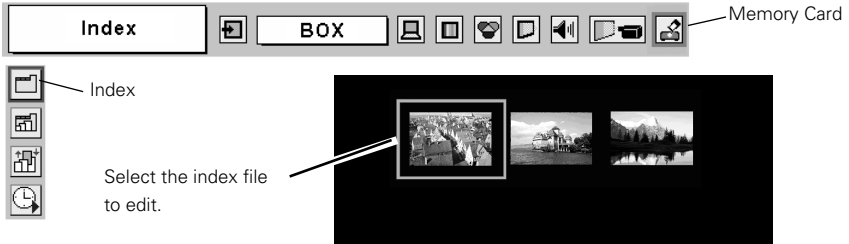
Edit Image Data for Display

The projector has quick editing functions. You can edit images and play them with the projector. The following editing functions are available with the projector.

- RotationRotates an image to the specified direction
- DeleteHides the image you do not want to display
- ReorderReorders images to be displayed.
- Reset the Setting.....Cancel all the settings done with the projector.

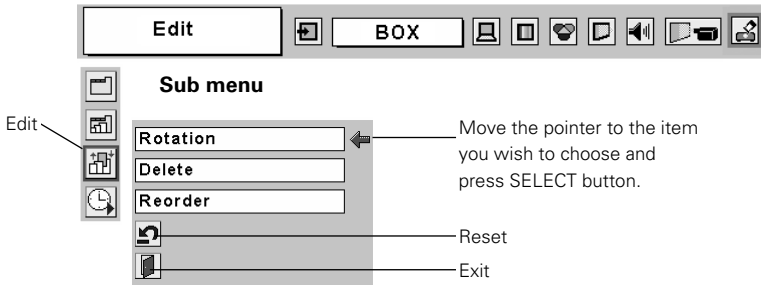
1. Select an Index file you wish to play.

Select "Index" in the Memory Card menu. Press MENU button to hide the On-Screen Menu. Select the index file to edit by pressing the Point Right or Left button.



2. Display the Edit Menu

Select "Edit" from the Memory Card menu and press SELECT button. Sub-menu will appear. Move the red arrow pointer to the item you wish to select and press SELECT button.

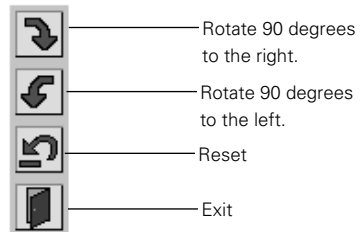


Rotation

- ① Move the red arrow pointer to "Rotation" and press SELECT button.
- ② Move the red frame pointer to the image you wish to rotate.
- ③ Press SELECT button. Rotation menu will appear. Press Point Up/Down button to select the direction to rotate the image. Then press SELECT button to execute the rotation . The image rotates by 90 degrees as you press SELECT button once.
- ④ Select Reset icon to reset all the editing. Select Quit to close the Edit menu.

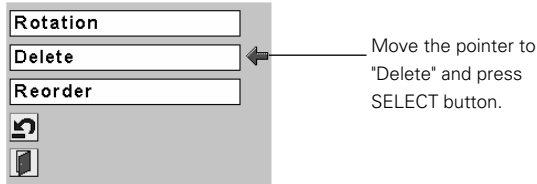


Rotation Menu



Delete

- ① Move the red arrow pointer with Point button to "Delete" and press SELECT button.



- ② Move the red frame pointer to the image you want to delete



- ③ Press SELECT button. Confirmation dialog box will appear. Select "Yes" to delete the image. X mark is put over the deleted image.

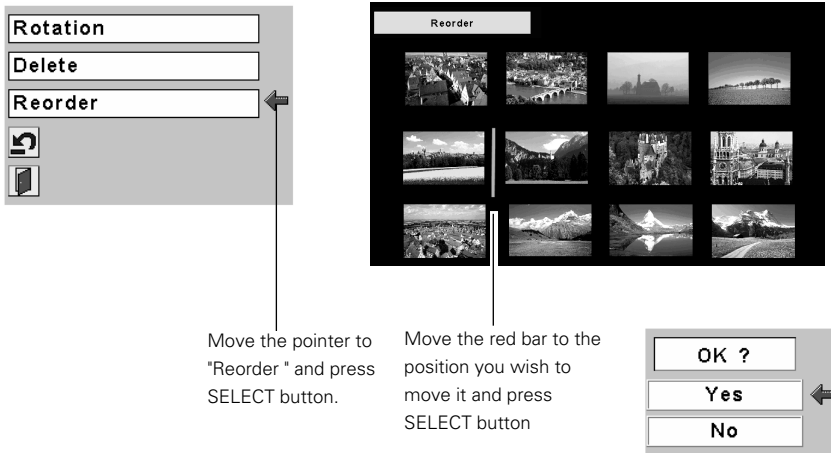
Note: To cancel the "Delete" action, select Reset icon in the Edit menu. But in that case, all the other editing operations will be canceled.



- ④ Select "Reset" icon in the Edit menu to undo all the editing operations. Select "Exit" to close the Edit menu.

Reorder

- ① Move the red arrow pointer to Reorder and press SELECT button.
 - ② Move the red frame pointer to the image you wish to move.
 - ③ Press SELECT button. A red bar appears at the left side of the selected image. Move the red bar to the position where the image to be placed and press SELECT button. Confirmation dialog will appear and then select Yes to move the image.
- Note: To cancel the "Reorder" action, select Reset icon in the Edit menu. But in that case, all the other editing operations will be canceled.



- ④ Select "Reset" icon in the Edit menu to undo all the editing operations. Select "Exit" to close the Edit menu.

3. Play the edited images

Press MENU button to show the On-Screen Menu. Select "Index" icon with Point button. Then press MENU button to hide the On-Screen Menu. Select the edited Index file and press SELECT button to play them.

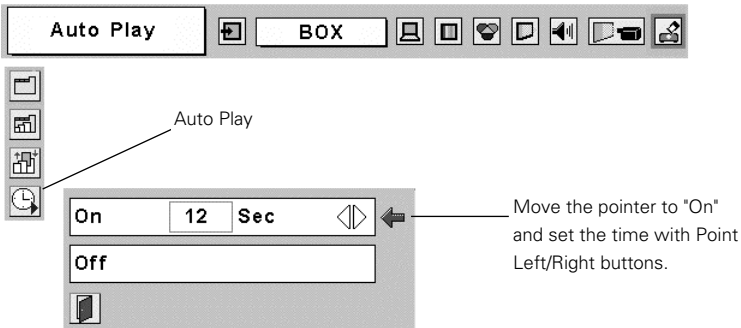
✎ About Edited Images ✎

Editing operation here is to edit images to be temporarily displayed. The editing does not affect the original data stored on the CF card. The edited images cannot be saved if you turn off or unplug the projector, or remove the CF Card from the projector.

Auto Play Setting

Images in the Index file can be played automatically. Select "Auto Play" in the MCI menu and set the interval time between the images.

Note: Time of intervals between images set on "Image Switch Timing Setting" menu of Slide Converter is prior to this Auto Play setting.



Chapter 3

3. Slide Converter

About Slide Converter

Slide Converter is software to edit and convert Bitmap, JPEG or PowerPoint files into image data to be played with MCI's Viewer function. This software has various unique edit functions to allow you to make effective presentations.

Operating Environment

This software requires the following computer environment.

| | |
|--|--|
| Required Operation System | Windows 98 / Me / NT4.0 / 2000 / XP |
| Requirements when using Windows 98 / Me / NT4.0 / 2000 | Over RAM 64MB main memory. (More memory will be required depending on applications running at the same time.) |
| Requirements when using Windows XP Home Edition / Professional | Over RAM 128MB main memory. (More memory will be required depending on applications running at the same time.) |
| Recommended CPU | Pentium3 600MHz or higher |
| HDD Disk Drive | More than 100MB free space |
| Display Setting | Supports the following resolutions. VGA (640×480), SVGA(800×600), XGA (1024×768) Number of colors : Either of 16 bit (65536 colors) or 24/32 bit (1,677 million colors) |

Viewer supports FAT16

Use Compact Flash Card formatted by FAT16. Viewer does not support FAT32 and NTFS formats.

Install Slide Converter

Install Slide Converter on your computer.

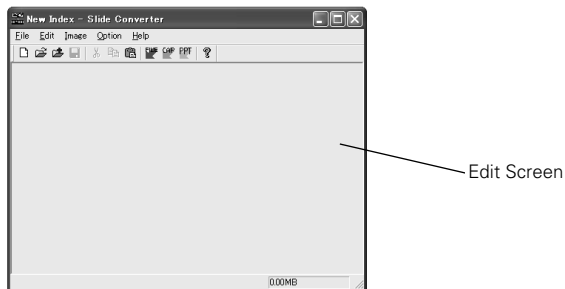
The software (Slide Converter) is included in the provided CD ROM.

For installation, refer to "5. Software and Installation" of the owner's manual "Setting and Operation" and select Slide Converter on Procedure 3.

Operating Slide Converter

Start up Slide Converter. The Edit window as shown below will appear.

Import, edit, and save image data by selecting items from the tool bar at the top of the window.

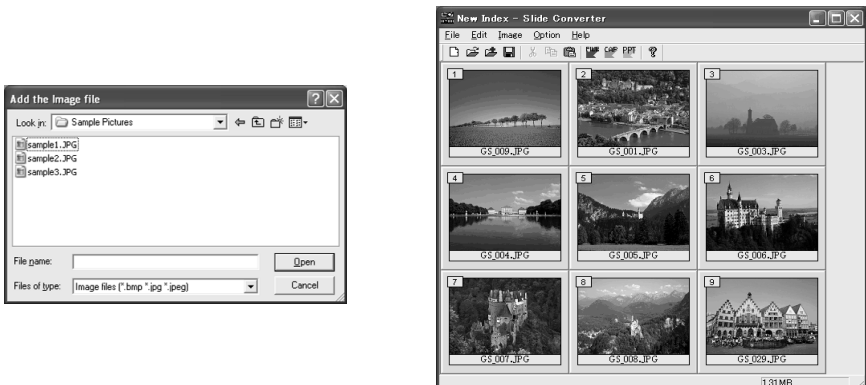


Import Image Files

- Import JPEG/BMP files

[Image] -> [Add Image file]

Import JPEG/bitmap files stored in Hard Drive on your computer to the Edit screen of Slide Converter.

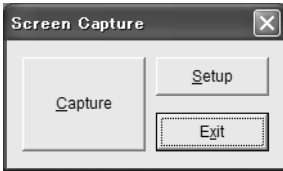


Note: You can import image files to the Edit screen simply by drag & drop operation. You can also move images on the Edit Screen by drag and drop.

- Capture the image on your computer screen

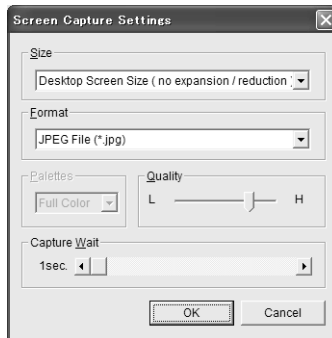
[Image] -> [Screen Capture]

Capture the image on your computer screen and load it to the Edit screen of Slide Converter. If you select "Screen Capture", the following dialog box will appear.



| Parameter | Description |
|----------------|---|
| Screen Capture |Captures whole viewing area of the image on your computer screen and imports it to the Edit screen. |
| Set up..... | Set up Display Capture (Refer to the chart below) |
| Exit | Close the Screen Capture dialog box |

Screen Capture



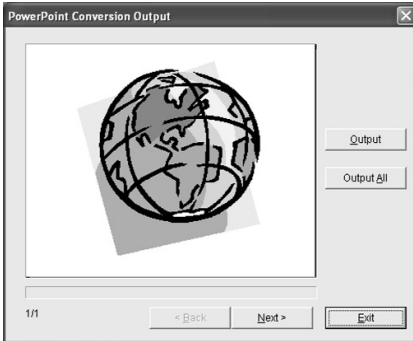
| Parameter | Description |
|-------------------|--|
| Size. | Selects screen size of the image to be captured among the following resolutions. 640x480 pixels, 800x600 pixels, and 1024x768 pixels or Desk Top Display size (No Expansion/reduction*) |
| Format..... | Selects file format of the image to be captured among the following formats. Windows Bitmap(*.bmp), JPEG File(*.jpg)(Default) |
| Palettes..... | Selects number of colors of the image to be captured among those described below if the file format is Windows Bitmap (*.bmp). 2 colors, 256 colors and full color(default) |
| Quality..... | Quality of the image to be captured is adjustable if the file format is JPEG (*.jpg). |
| Capture Wait..... | Set time from "Screen Capture" to capturing the computer screen between 1 and 10 seconds. |

Note: If display resolution of your computer is larger than 1024x768 pixels, the MCI may compress the image to be projected which may affect the projected image quality.

- Import PowerPoint data

[Image] -> [Import PowerPoint File]

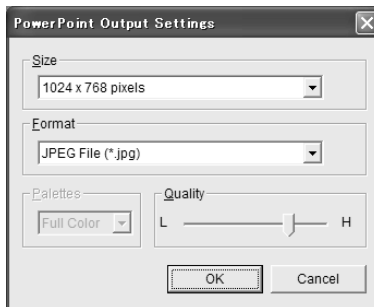
Convert PowerPoint data to JPEG or bitmap image and import it to the Edit screen of Slide Converter.



| Parameter | Description |
|------------------|---|
| Output | Imports an image displayed on the screen. |
| Output All | Imports all the images on the PowerPoint File |
| Next | Displays the next image. |
| Back | Displays the previous image. |
| Exit | Close the screen. |

✎ Configuration of outputting PowerPoint data ✎

To make settings for PowerPoint data to be imported, select Output Settings from Option menu.



| Parameter | Description |
|----------------|--|
| Size | Selects screen size of the PowerPoint file to be imported among following resolutions described below. 640x480 pixels, 800x600 pixels or 1024x768 pixels (default) |
| Format | Selects file format of the PowerPoint file to be imported among the following formats Windows Bitmap(*.bmp), JPEG File(*.jpg) (default) |
| Palettes | Selects number of colors of the image to be captured among those described below if the file format is Windows Bitmap (*.bmp). 2 colors, 256 colors and full color(default) |
| Quality | Quality of the image of the PowerPoint data to be imported is adjustable if the file format is JPEG (*.jpg). |

- *Open or add existing Index files*

[File] -> [Open Index]

Select Open Index from File menu to open stored index files on Slide Converter.

[File] -> [Add Index]

Select Add Index from File menu to add another index file to the index file opened.



Edit Image files

- *Cut / Copy / Paste / Delete*

Select an item you want from Edit menu.

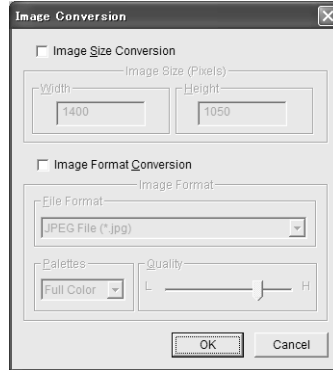
Details for each item is as follows:

| Parameter | Description |
|------------------|--|
| Cut | Copies the selected image. |
| Copy | Copies the selected image. |
| Paste | Pastes the copied or cut image on Slide Converter. |
| Delete..... | Deletes the selected image. |
| Select All | Select all the opened images. |

- Convert image size and file format

[Image] -> [Arrange Image File] -> [Convert Image]

The following dialog box will appear.



| Parameter | Description |
|------------------------------|--|
| Image Size Conversion | Converts the size of the image selected to the size input in Width (1-1024) and Height (1-768) boxes. |
| Image Format Conversion..... | Converts the file format, number of colors and image quality of the file selected following to those input in Format, Palettes, and Quality boxes. |
| Format..... | Selects file format of the image to be captured among the following formats. Windows Bitmap(*.bmp), JPEG File(*.jpg)(Default) |
| Palettes..... | Selects number of colors of the image to be captured among those described below if the file format is Windows Bitmap (*.bmp). 2 colors, 256 colors and full color(default) |
| Quality..... | Quality of the image is adjustable if you choose the file format as JPEG (*.jpg). |

- Flip Image Vertically/Horizontally or Rotate

[Image] -> [Arrange Image File] -> [Flip Image Vertically] / [Flip Image Horizontally] / [Rotate Image]

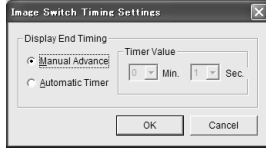
Details for each item is as follows:

| Parameter | Description |
|-------------------------------|--|
| Flip Image Vertically | Flips the image selected vertically |
| Flip Image Horizontally | Flips the image selected horizontally |
| Rotate Image | Rotates the image selected 90 degree clockwise |

- *Set the image switch timing*

[Option] -> [Image Switch Timing Settings]

Set the timing of switching images to be displayed.



| Parameter | Description |
|-----------------------|--|
| Manual Advance | Switch image when pressing Point Up/Down button on the remote control or top control of the projector. |
| Automatic Timer | Switch images at the interval time set on Timer Value* |
| Timer Value | Set an interval time for Automatic Timer. |

Note1: At the factory, "Manual Advance" is selected.

Note2: When playing images automatically with the projector, time of intervals between images set on "Image Switch Timing Setting" menu is prior to that on "Auto Play" of the Viewer function.

- *Execute a slide show*

[Image] -> [Slide Show]

Select Slide Show from Image menu to simulate a slide show on your computer display. The slide show will be executed in order of the numbers shown at the left top of each image.

Switch images by using Page Up/Down key on your PC keyboard if no setting on the Image Switch Timing. To exit the slide show, press Esc key.

Save / Delete Data

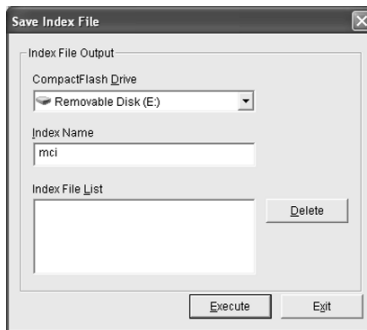
Select Save as from File menu.

Image data is saved as Index format.

- Save

[File] -> [Save As]

Name the index file opened and save it on a CF card drive as the Index File Output dialog box below appears.



| Parameter | Description |
|--------------------------|---|
| CompactFlash Drive | Specifies a CF card drive as the output destination to save the index file data on a CF card. |
| Index Name | Names the edited index file. |
| Index File List | Lists all the index files stored. |
| Delete | Deletes the index file selected from the Index File List. |
| Execute..... | Saves the index file. |
| Exit | Closes the Index File Output dialog box. |

Caution: When saving image files, specify a drive recognizes a CF card as the output destination. Do not drag and drop the image files to save them as the image files saved by drag and drop operation cannot be played.

- *Select(Register) image files to be played and arrange them in order*

[File] -> [Registered Index Order Setting]

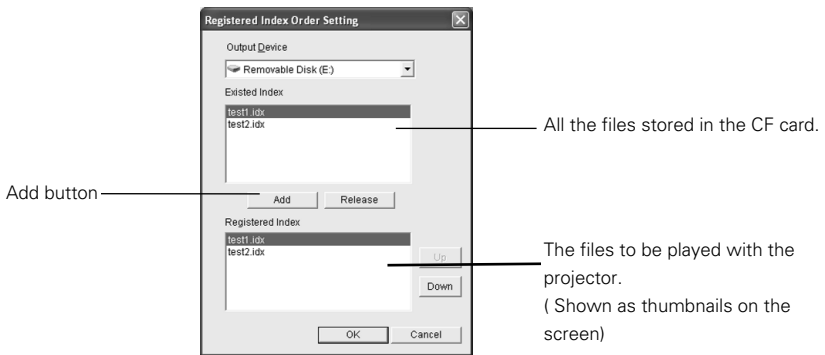
Select Index files you wish to display with the projector from those stored in the CF card. Also arrange the files in the order to be displayed.

Note: "The order to be displayed" means here is the order of the thumbnails to be shown on the screen when you select Index icon from the MCI menu (See P10). Since Index files are not linked each other, the files cannot be auto-played successively.

All the index files stored on the CF card are shown at the top window of the "Registered Index Order Setting" screen. Files to be selected are shown at the bottom window.

Select a file to be played and press "Add" button. The selected file will appear at the bottom window. To delete the registered files, select a file to be deleted and then press "Release" button.

Caution: If not registered, the Index files cannot be played with Viewer function of the projector even if they are stored on a CF card. When selecting "Index" from the Viewer menu of the projector, its thumbnail does not appear on the screen.



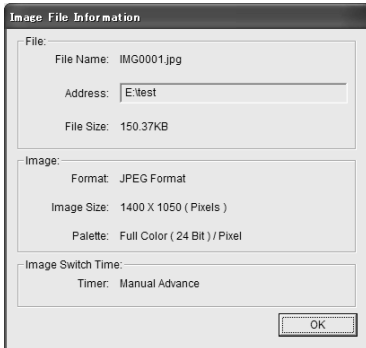
| Parameter | Description |
|-----------------------|--|
| Output Device..... | Specifies a CF card drive |
| Existed Index | Shows stored index files. |
| Add | Adds an index file selected from "Existed Index" to "Registered Index". You can add up to twelve index files to "Registered Index" field. If you add 13th file, the error message will appear. |
| Release | Releases the selected index file from the Registered Index. |
| Registered Index..... | Places index files in the order to be played. |
| Up | Switch the order of the selected index file with the above one. |
| Down | Switch the order of the selected index file with the below one. |
| OK..... | Save the setting of the registered index files. |
| Cancel | Close the dialog box without saving the setting. |

Other Functions

- See information of the image file

[Image] -> [Image File Information]

See the information of the selected image.

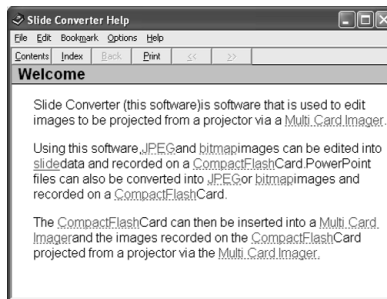


| Parameter | Description |
|------------------|--|
| File Name | Shows the file name. |
| Address | Shows where the file is. |
| File Size | Shows the data size. |
| Format | Shows the file format. |
| Image Size | Shows the image size. |
| Palette | Shows the number of colors. |
| Timer | Shows time of switching images in a slide show function. |

- See Help

[Help] -> [Slide Converter Help]

See "Help" of Slide Converter.



[Help] -> [About Slide Converter]

See the version information of the software.





